

# Arden, Loch Lomond

Case Study





## Stunning National Park location

**Guest accommodation, along with private accommodation for the owner, positioned on the treasured shores of Loch Lomond.**

Arden is undoubtedly a project to remember – set on the tranquil shores of Loch Lomond with panoramic views of the fells, it's the perfect location for a romantic getaway. The project consists of guest accommodation as well as private accommodation for the owner. Set within the National Park, the tight restrictions didn't affect this luxurious project and its glorious outcome.

Carpenter Oak was commissioned in 2014 with the project completed in the spring of 2018.

---

### Features:

Three panels of 8m<sup>2</sup> glazing. Vaulted living room with mezzanine and a 10-metre wide balcony

### Requirements:

The plot is within a National Park which brings many restrictions

### Completion:

Spring 2018

### Architect:

Hay Lough Davis, Dumbarton











# Floor Plans

**Ground Floor approx:** 390m<sup>2</sup>

**First Floor approx:** 180m<sup>2</sup>

**Total:** 570m<sup>2</sup>

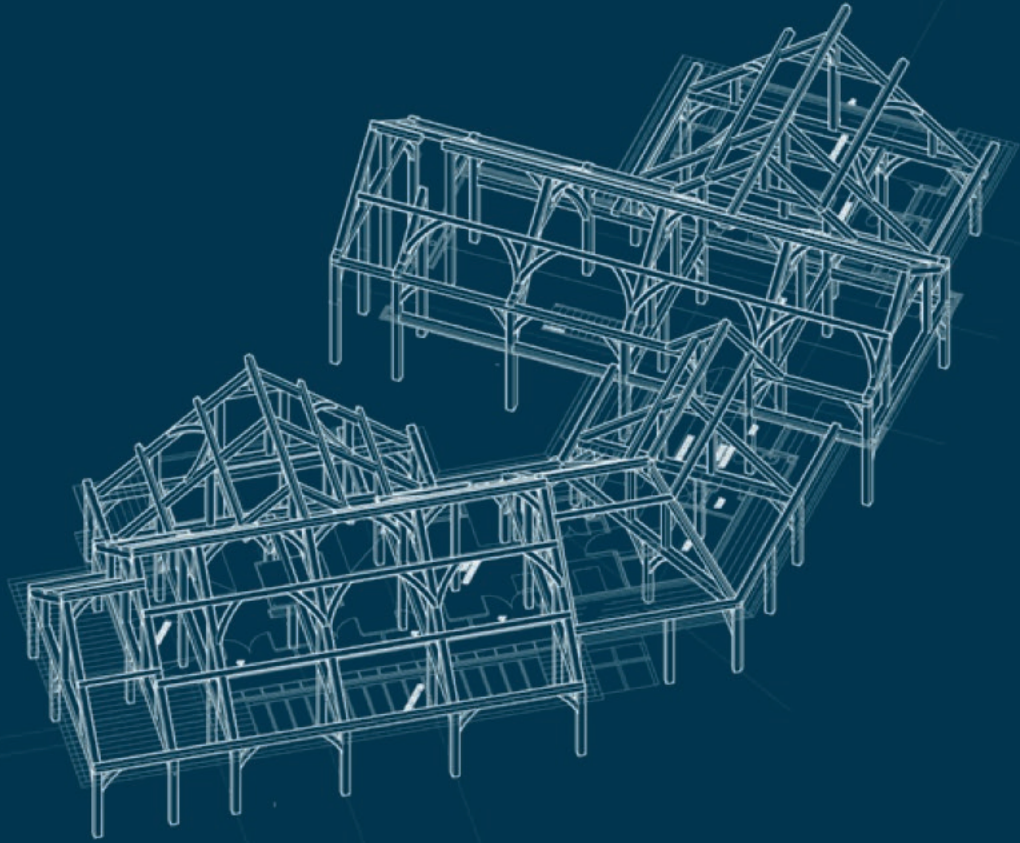
## Combining oak frame with glazing

The primary oak structure is encapsulated by our partners, Fleming Homes, making the building wind and weather tight within three weeks - speeding up the build time considerably. Arden is full of features - the highlight of which is the huge expanse of direct glazing. Three of the largest panels of the glass, at 8m<sup>2</sup>, were the largest spans we have ever worked with. Arden also features a vaulted living room with mezzanine, 10-metre cross frame span as well as a 10-metre wide balcony.

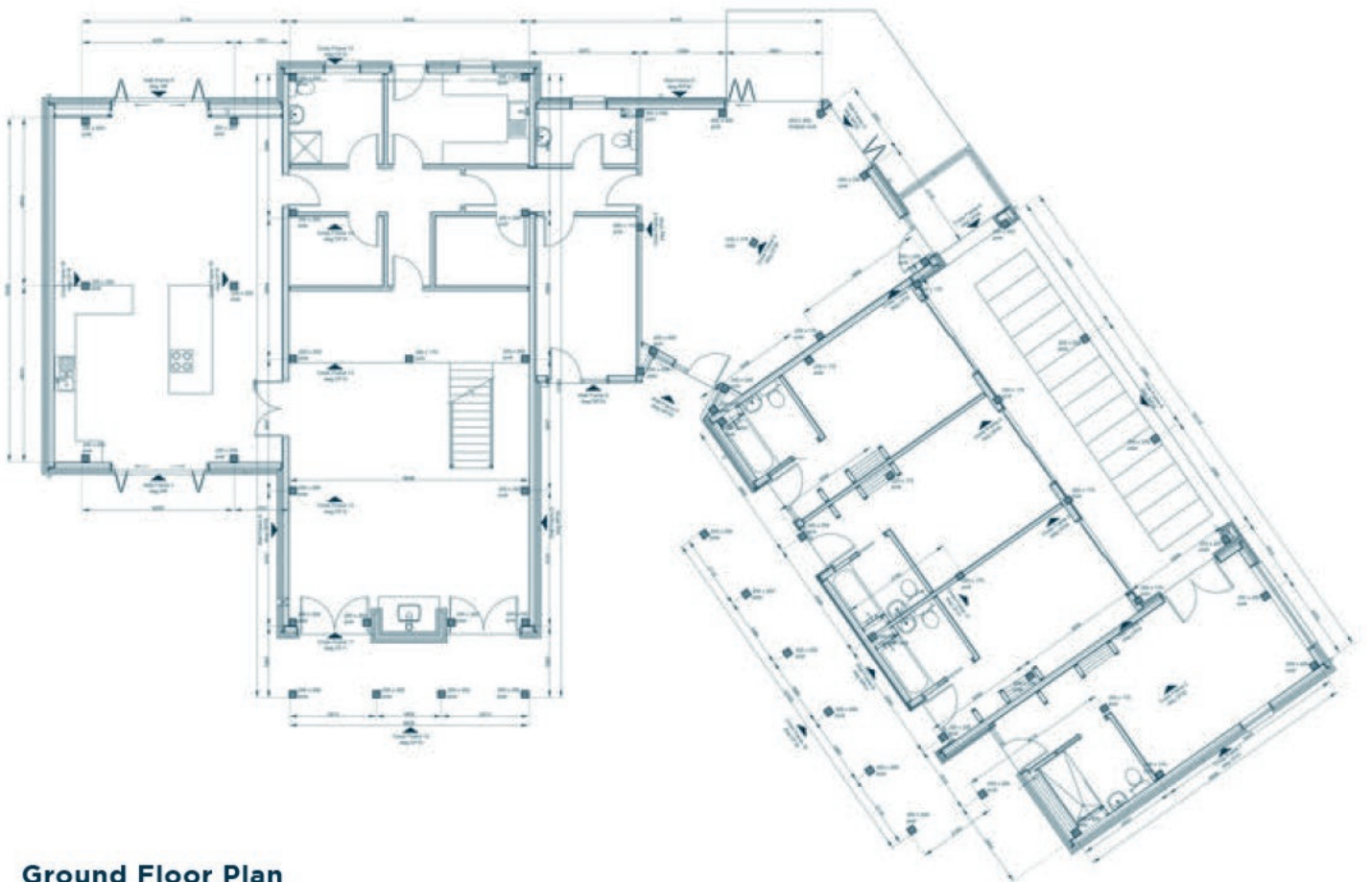


Get In touch today to discuss  
your project with our team

**+44 (0)1803 732900**



**Ground Floor Plan**



**Ground Floor Plan**



T +44 (0)1803 732900

E [hello@carpenteroak.com](mailto:hello@carpenteroak.com)

Devon • Cornwall • Wiltshire • Scotland

**Crafted by design.**

Printed on FSC or 100% recycled  
paper using vegetable inks